

BCP

IMPACT REPORT

MAKING CONSERVATION OF WILDLIFE
HABITAT VALUABLE TO PEOPLE



2021



Table of Contents

<u>Putting Africa on the Map in 2021</u>	01
<u>The Significance of REDD+</u>	02
<u>Executive Summary</u>	03
<u>Just How Does our Award Winning REDD+ Model Work?</u>	04
<u>Project Updates</u>	06
<u>Project Map</u>	07
<u>Lower Zambezi REDD+ Project (LZRP)</u>	08
<u>Luangwa Community Forests Project (LCFP)</u>	10
<u>BCP Community Impacts</u>	12
<u>Incentivizing Conservation Through A Cash Dividend Project</u>	15
<u>BCP Livelihood Impacts Across Both Projects</u>	16
<u>Sustainable Future for People and Planet</u>	17
<u>Climate-Smart Agriculture</u>	18
<u>BCP Partners with Nature's Nectar</u>	20
<u>Eco-Charcoal</u>	22
<u>100 % Climate Positive in 2021</u>	23
<u>Protecting and Connecting Vital Legacy Landscapes</u>	24
<u>Mpanshya Wildlife Corridor</u>	26
<u>Investing in Resource Protection in 2021</u>	27
<u>Biodiversity and Conservation Impacts</u>	28
<u>Lion Carbon</u>	30
<u>FUCH's Elephant Charge 2021: Team #24 Eco-Charcoal</u>	31
<u>Best for Workers in 2021</u>	32
<u>UN Sustainable Development Goals</u>	34
<u>Environmental Finance Voluntary Carbon Market Rankings 2021</u>	42
<u>30 Cubed</u>	43
<u>Looking Ahead</u>	44
<u>The Proposed Kafue-Zambezi Community Forests Project (KZCFP)</u>	45
<u>Thank You!</u>	46
<u>Acknowledgements</u>	47
<u>Contact Us</u>	48



Putting Africa on the Map in 2021



Blazing the way as the most durable form of conservation finance, forest carbon fees were able to withstand the pandemic when tourism could not.

With the World's eyes on climate change, 2021 was Zambia's opportunity to establish itself as a REDD+ model on the African continent, and offer a solution both internationally and on a local scale to combat the problem. Together with Zambian Government, our REDD+ model was key in helping to unlock Zambia's Green Economy and helping Zambia thrive.

In 2020 and 2021, while the Zambian economy is estimated to have contracted by 1.2%, with thousands of jobs lost as a result of Covid-19, the pandemic placed immense pressure on Zambia's rural communities, many of whom rely on the conservation, tourism and agricultural sectors. While tourism has been pushed to the brink (with South Luangwa NP generating an estimated \$30 million pre-Covid-19 to as little as \$4.5 million at the peak of the pandemic), REDD+ has continued to bring revenue to local communities, with direct payments of US\$8 million + directly paid to communities since the pandemic began. Over the last five years, household income has increased 171% in the LCFP, and a minimum of 2,200+ opportunities of income generation have been created across both projects, demonstrating how durable and successful the REDD+ model has proven to Zambia's local economy!



The Significance of REDD+

When it comes to climate change, Africa is so often the ‘forgotten continent’, for it receives less than 3% of global climate finance, however, 30 out of the 40 most climate-vulnerable countries in the world are in Africa. The increased temperatures and a greater likelihood of extreme weather events resulting from climate change are projected to increase the threat of drought and increased water scarcity in Africa. Only impacting further, and increasing the fragility of food security for parts of the continent that already faces barriers when it comes to accessing food and water.

The continent has around 17% of the world’s population but produces less than 4% of global emissions (roughly 600 million people on the continent still don’t have electricity), and yet, extreme weather events are growing in both frequency and severity with an alarming impact on biodiversity loss, making it so important to put African projects, such as ours on the map.

Globally, it is estimated that 23% of human-caused greenhouse gas emissions come from agriculture, forestry, and other land use. An estimated 60% of Zambia’s population depends on subsistence farming for their livelihoods, while globally, subsistence farming accounts for 48% of the world’s deforestation!

African countries need more control, greater impact, and superior resources in the global fight against climate change. It is our mission to work with Government, communities and partner organizations to continue to put African countries at the forefront of climate change action globally, by helping to build resilience through REDD+ projects in Africa.



Executive Summary

The 8th National Development plan speaks to an achievement of “A prosperous middle income nation by 2030 and a midterm socio economic transformation for improved livelihoods”. Zambia is by no means excluded from the global impact of Covid-19. As a company we have been wholly fortunate to see our way through the last few years of global turmoil. In order to strategically position the company and drive lasting change, BCP has engaged a talented and diverse team of 227 people that blends the right mix of critical skills, and project management experience, that will deliver the highest quality of technical support and expertise to the communities and clients that work with us.



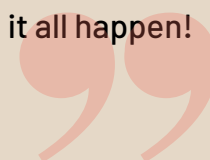
The REDD+ sector is one that has remained consistent, durable and actually increased revenue streams while other parts of the economy have struggled. For this we have to thank our valued partners in the Zambian Government, most notably The Forestry Department and the Department of National Parks and Wildlife, simply put, without either of these departments we would have no projects in Zambia. We owe a huge thank you to the Ministry of Agriculture for the expertise that they provide us with through the partnership we have with the Ministry under BCP's Livelihood initiative, which bolsters our projects by providing communities with education in climate-smart agriculture and additional revenue streams such as sustainable honey production. We are very excited to see the introduction of the Ministry of the Green Economy, which will strengthen considerably Zambia's potential to be at the forefront of climate action regionally. The 13 Chiefdoms that we partner with under both of our respective projects are the custodians of the community forests that we are all striving to protect, and it is due to their commitment to conservation that the Lower Zambezi REDD+ Project and the Luangwa Community Forests Project have grown to be the world renown beacon's of REDD+ projects in Africa. Lastly, but certainly not least, the amount of traction that BCP has achieved over the last 10 years would not have been possible without our *BCPeople* - the passion, expertise and resilience that drives us. Our organizational mantra is to retain and train the best to remain the best! Allowing us to deliver world class impacts across climate, community and biodiversity.

Looking ahead, we are excited to step into the next chapter to SSS - Streamline, Standardize and Scale. By 2030, BCP is set to deliver on our goal of avoiding 30 million tons of emissions annually, benefitting 3 million people, and partnering with communities across 30 million acres of globally significant wildlife habitat. I am excited to be holding the baton for BCP supported by an integral board of directors and dedicated team of experts in the race against climate change.

I would like to use this opportunity to thank Dr. Hassan Sachedina for his commitment and dedication to BCP over the past 10 years. On 31 December 2021, after serving as CEO for exactly 10 years to the day, Hassan made the decision to step aside from day-to-day management in favor of a more strategic role in the company as a member of the BCP Board.

We hope you enjoy reading BCP's second annual Impact Report as much as we enjoyed making it all happen!

Sincerely,
Nic Mudaly,
BCP ICEO.



Just How does our Award Winning REDD+ Model Work?

Driving a new form of conservation finance that unites the community, wildlife, and climate positivity under the REDD+ Model:

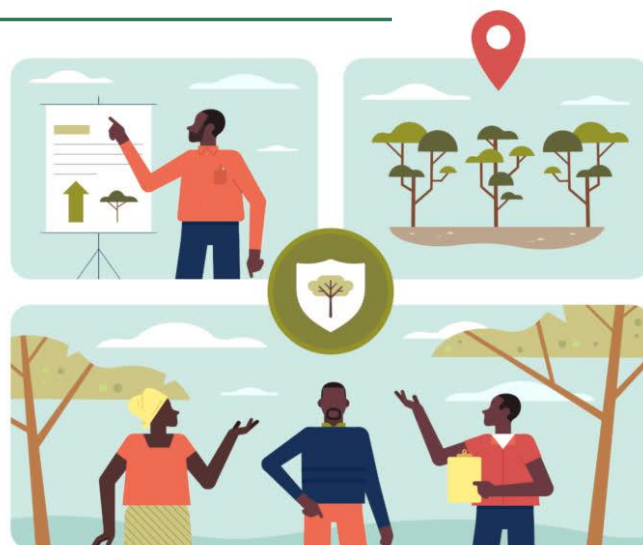
Free, Prior and Informed Consent (FPIC) is a specific right that pertains to indigenous peoples and is recognised in the United Nations Declaration on the Rights of Indigenous Peoples (UNDRIP). It allows them to give or withhold consent to a project that may affect them or their territories.

Our Approach - The BCP REDD+ Model

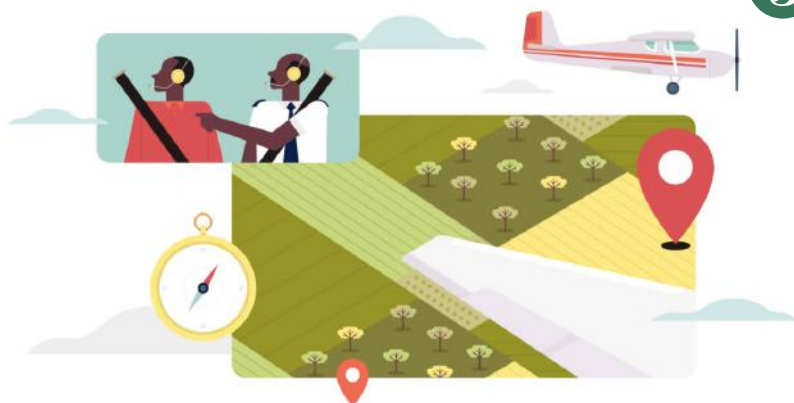


- 1 We follow internationally recognised standards of obtaining “Free, Prior, and Informed Consent” in order to work with communities to protect forests. This ensures that communities understand and agree to a REDD+ forest protection project.

- 2 By following the principles of “Free, Prior and Informed Consent,” we engage with communities to explain the importance of protecting forests, and the key role they play. We do this through community meetings, mapping and “ground truthing” activities that allow communities to visit and confirm the proposed boundaries of forests to protect. We also work with traditional leaders and community ambassadors who represent each area.



- 3 Going further with Free Prior and Informed Consent: Beyond normal methods of engaging communities, we also use a light aircraft to fly community representatives over their forests. This activity gives community representatives an aerial view of their forests, and helps them identify and confirm the areas they are proposing to protect.





4

Ground Truthing: Community representatives and BCP walk along the proposed boundaries of the protected forest before the boundaries are confirmed.

5

The community and BCP enter into long-term (30+ years) binding agreements to keep the forest protected in the areas that we have agreed.



6

Together with the community we work to protect the forest and make investments into local livelihoods. We aim to improve infrastructure, education, provide training and deliver other benefits that can be linked to forest protection. Our community investments are funded through the sale of verified Forest Carbon Offsets.



Revenue from the sale of offsets is invested back into communities, creating a more prosperous future through sustainable livelihoods and enterprises, and improved access to social services such as education, healthcare and clean water.

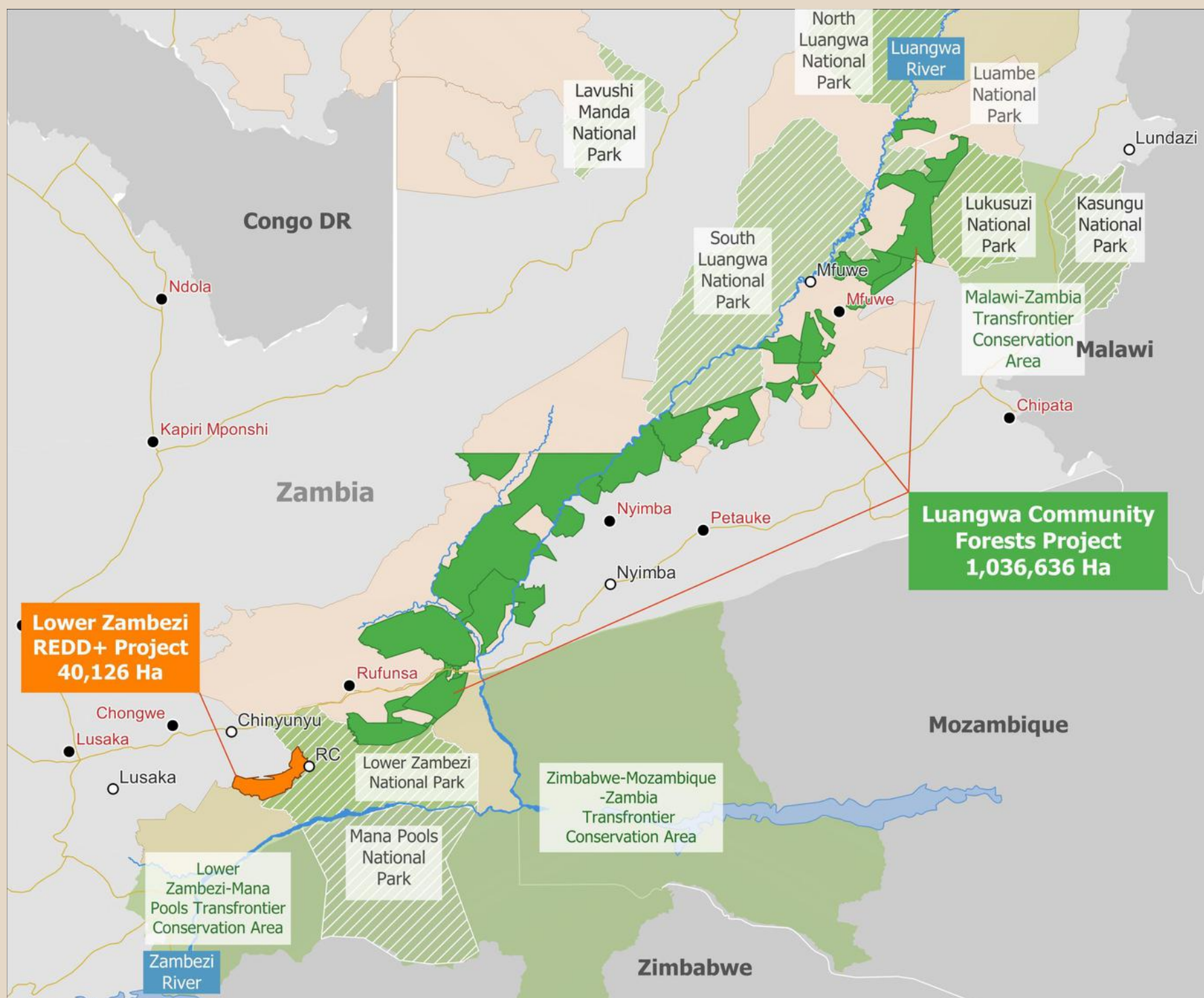
When communities have an incentive to protect their forests and wildlife it is a win for the communities, a win for biodiversity, and a win for our planet!



Project Updates



Protecting Vital Ecosystems in the Luangwa to Lower Zambezi Valleys under REDD+



The Lower Zambezi REDD+ Project (LZRP)

The First REDD+ Project in AFRICA to achieve 8 consecutive successful VCS verifications. As the first REDD+ Project in Zambia, the LZRP pioneered the development of forest conservation projects in the country.

The Lower Zambezi REDD+ Project was BCP's pilot project that pioneered REDD+ in Zambia. The project covers a 40,126-hectare buffer to the Lower Zambezi National Park on a piece of private land known as Rufunsa Conservancy. The project is currently the first project in Africa to have achieved 8 consecutive and successful verifications against the Verified Carbon Standard (VCS) and was the first project in Africa (second in the World) to achieve CCB Triple Gold Verification against the Climate, Community and Biodiversity Alliance Standards.

In cooperation with 7,200 local community members in Bunda Bunda Chiefdom and The Soli Shamifwi Royal Establishment, the project develops sustainable land-use practices that conserve threatened forests and wildlife, while also investing in development for rural communities.

The LZRP supports a number of different livelihood projects including Climate-Smart Agriculture training, Eco-Charcoal, and bee-keeping.

The LZRP provides a vital buffer area to The Lower Zambezi National Park, protecting over 60 kilometers of the boundary. Sable and roan antelope are among many special species found in the LZRP Project area. The Luangwa to Lower Zambezi eco-system is also one of Africa's last 10 lion strongholds, and home to one of the region's largest elephant populations. We look forward to the day when elephant and lion roam free in Rufunsa.



The Lower Zambezi REDD+ Project



40,126

Total hectares of forest protected

20,624,764

Estimated trees protected

1,199

Households benefiting directly from forest carbon fees.



7,194

Community beneficiaries



199,631

Tons of carbon dioxide emissions reduced in 2021.

39

Community impact projects implemented since inception.



34

BCP and partner supported Community Scouts.



31

Lead Farmers

691

Follower Farmers trained in Climate-Smart Agriculture during 2021.



692

Beehives hung for sustainable honey production.



56%

Kwacha increase in annual income since inception.



\$125,351

Paid to LZRP in Livelihood Investments in 2021.



11

Active Charpreneurs in producing sustainable Eco-Charcoal.

ECO-CHARCOAL



The Luangwa Community Forests Project (LCFP)

Voted the Best Individual Offsetting Project in the World in the Environmental Finance's Voluntary Carbon Market Rankings in 2021, protecting over 1 million hectares of forest, the LCFP is the largest REDD+ Project in Africa, and arguably, the largest in the World in terms of quantified social impact. The project benefits over 217,000 people in some of Zambia's most impoverished provinces through income generation and social services development.

Delivering award-winning carbon credits, life-changing impacts, and nature-based solutions to climate change.

The LCFP is currently the largest REDD+ project in Africa by hectares currently covering 1,036,636 hectares. The project partners with 12 Chiefdoms in the Luangwa to Lower Zambezi valleys, and is implemented on communal land within the Game Management Areas (GMAs) surrounding National Parks with a small percentage in private game ranches.

The Luangwa Valley is one of the greatest wildlife strongholds remaining on Earth; home to African wild dogs, elephants, leopards, and lions.

The Luangwa River, one of Africa's longest undammed free-flowing rivers, is a pivotal lifeline to one of the richest wildlife concentrations on earth. The valley topography presents breathtaking beauty in the landscape while also keeping wildlife population density in the area high, resulting in a strong tourism industry that contributes significantly to Zambia's economy.

The LCFP works to address key drivers of deforestation while also benefitting local communities by reducing poverty, creating sustainable incomes, improving social services, and encouraging conservation.

The project has been successfully verified three times through the Verified Carbon Standard and has achieved CCB Triple Gold Validation for exceptional community impact.



The Luangwa Community Forests Project



1,036,636

Total hectares of forest protected

565,102,877.821

Estimated trees protected

36,000 +

Households benefiting directly from forest carbon fees.

217,000 +

Community beneficiaries



1.7million

Tons of carbon dioxide emissions reduced in 2021.

209

Community impact projects implemented since inception.

\$8,900,460

Has been distributed to the 12 Chiefdoms in the LCFP since 2017.

272

BCP and partner supported Community Scouts.



345

Lead Farmers

3,520

Follower Farmers trained in Climate-Smart Agriculture during 2021.



2,513

Beehives hung for sustainable honey production.



171%

Kwacha increase in annual household income since inception.



\$381,793

Paid to LCFP in Livelihood Investments in 2021.

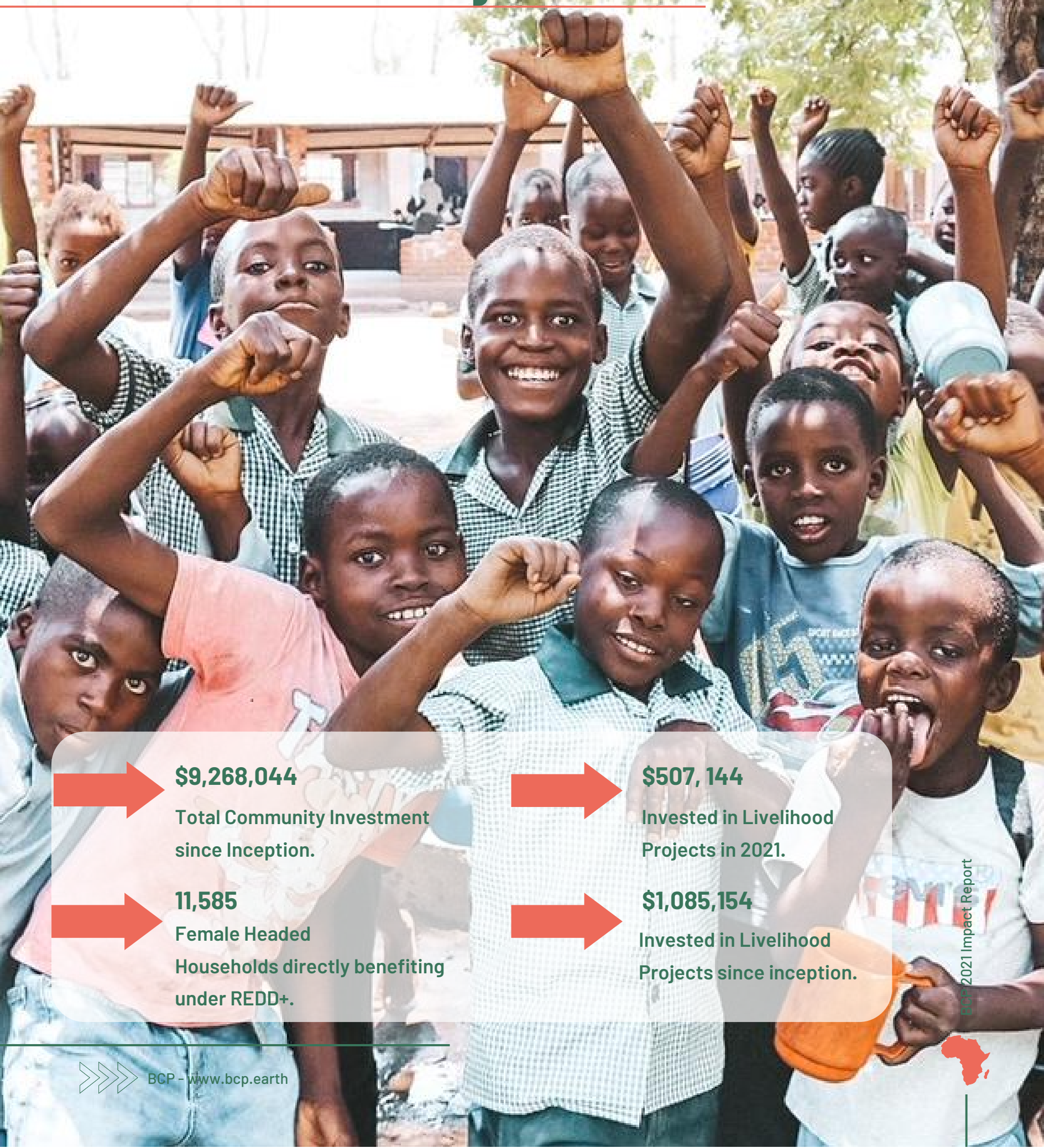


2,000

Indirect jobs created through community investment project since inception.



BCP Community Impacts Across Both Projects



\$9,268,044
Total Community Investment since Inception.

11,585
Female Headed Households directly benefiting under REDD+.

\$507,144
Invested in Livelihood Projects in 2021.

\$1,085,154
Invested in Livelihood Projects since inception.





16
Clinics or Healthcare Facilities built and/or initiated since inception.



56
Education related projects built and/or initiated since inception.



107
WASH Projects Created and Boreholes Sunk and/or initiated since inception.



51
Livelihood and Social Projects built and/or initiated since inception.



18
Stakeholder Facility Improvement Projects built and/or initiated since inception (such as Police posts, CRB offices & Scout Houses).



64 %
Community Chieftdom hires in 2021.





“Before we partnered with BCP under the LCFP, our community was left wanting in terms of development. But now we have used the revenue from the forest carbon fees to invest in infrastructure projects in the community, such as Sandwe Primary School, it was extremely dilapidated, but we used the forest carbon fees to renovate it, which has increased enrolment, especially among female students. We have sunk a number of boreholes, which has made access to clean water readily available. While we have also invested in the rehabilitation of health centres. Seeing these life-changing impacts has changed the mind-set of the community members, previously there were

many farmers scattered in the forests, but after conducting sensitization meetings and for these farmers to see the impacts, there are fewer turning to such harmful methods of farming as they see value in conserving the forests”.

His Royal Highness, John Zimba, Chief Sandwe.



This borehole has changed our lives. Before we were gathering water from the same stream as our livestock. Now we have access to fresh and clean water.

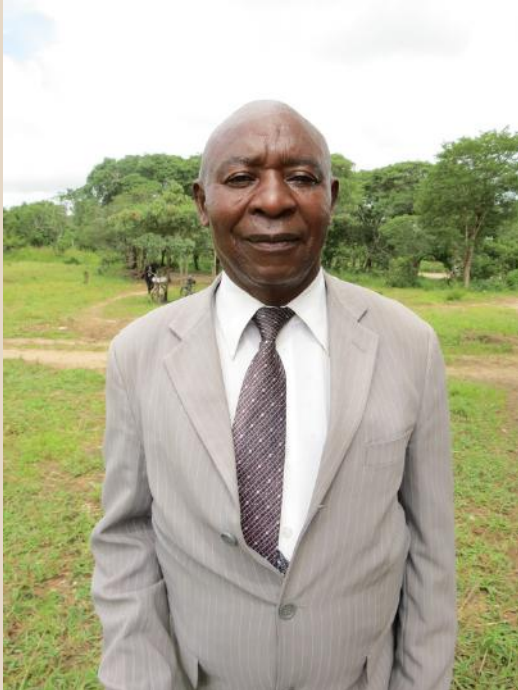


*Alice, Sandwe Village,
Eastern Province.*



Incentivizing Conservation Through A Cash Dividend Project In Mweshang'ombe Zone

In 2020-2021 in partnership with the **Zambian Government**, and supported by **The Mills Foundation**, BCP launched the first-ever cash dividend pilot project; targeting 178 households from 6 villages in Mweshang'ombe zone of Bunda Bunda Chiefdom.



This one-year pilot scheme offered a direct way of incentivizing communities to co-manage and conserve forests in Rufunsa by offering communities a direct cash incentive to protect the forests they live alongside.

“People in this area are poor, and although we advise against deforestation, in some cases people are desperate and feel they have no other choice. We are so grateful to BCP for this opportunity, as village leaders, we try and encourage recipients of this pilot project to invest this money in school books and school uniforms so that the children here are able to receive an education. This way they are educated against deforestation and educated in the implications of climate change”

Headman Malilakufusa of Malilakufwa Village.

“These communities are predominantly subsistence farmers, and this is what they rely on as their income. We find that when weather conditions are adverse, more incidents of deforestation and poaching take place in this particular zone. We are hoping that through this incentive, people will not encroach on the forests because they are being provided with an alternative form of income”

Brighton Chama, Bunda Bunda BCP Chiefdom Lead.

Before the LZRP, deforestation rates were estimated to be as much as eleven times higher than Zambia's national rate, which is already estimated to be one of the highest in the world. This area also has a growing human population with soaring poverty rates, as high as 88%, which meant many families turned to charcoal production as a main source of income. As much as 53% of Lusaka's charcoal supply was estimated to come through the area.



BCP Livelihood Impacts Across Both Projects in 2021



Sustainable Future for People and Planet

When a Household is food insecure it consumes them, and becomes extremely hard to focus on development beyond the implications and barriers imposed by chronic hunger.

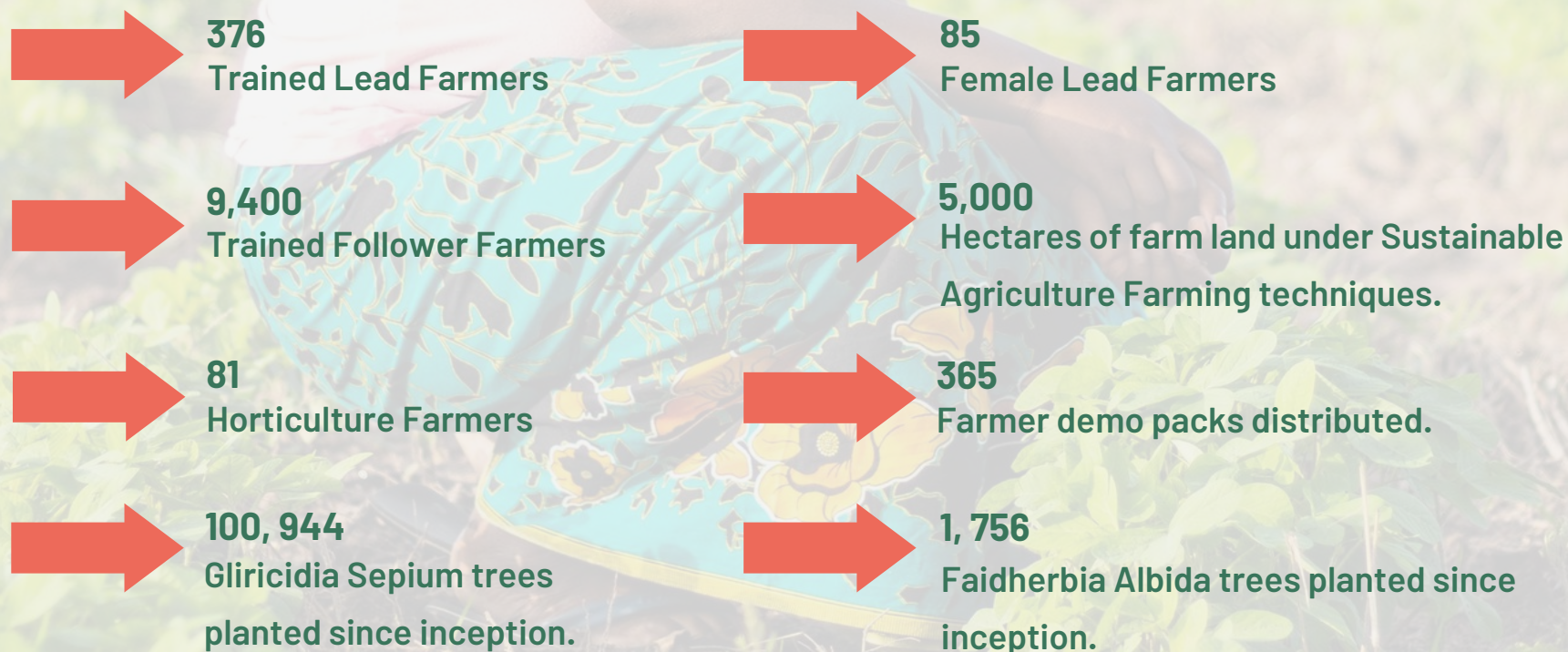
BCP, in collaboration with the Ministry of Agriculture and Livestock, has been working with farmers in an effort to address food security challenges through the farmer to farmer extension model. In an effort to respond to the country's vulnerability to climate change challenges, which directly affects food security in the country, BCP has invested in Climate-Smart Agriculture technologies. With agriculture expansion as such a major threat to the forests, Climate-Smart Agriculture helps to provide food security and a sustainable future for some of Zambia's most nutrition insecure families. In the 2020/21 farming season maize grain yields improved to 4.9tons/ha against the baseline of 1.8tons/ha amongst the lead farmers that we are working with.

Benefits of Climate-Smart Agriculture:

- ① Improved soil nutrition.
- ② Increases the soil organic carbon pool over time.
- ③ Promotes improved yields using far less land.



Climate-Smart Agriculture Impacts in 2021





My garden is flourishing since I took part in the horticulture training provided by BCP. The treadle pump has cut the time that it takes to water my garden by half. It means I am much more efficient and can grow more fruit and vegetables, allowing me to ensure food security for my family and sell the surplus at the market to help pay school fees for my children. You know, as a parent that's what I want – to be able to feed and educate my children.

Gloria Daka Mbuzi, Horticulture Farmer in Shikabeta Chiefdom.

As part of our mission to support sustainable livelihood initiatives we work closely with our community partners through agriculture programs that supports with both training and equipment.

BCP's Agriculture team, in collaboration with our community partners, and the Ministry of Agriculture and Livestock, have implemented a horticulture training program with a particular focus on fresh vegetables and fruit production. Across all 13 Chiefdoms, a total of 80 treadle pumps and vegetable seed starter packs were distributed as part of the pilot program.

An estimated 60% of Zambia's population depends on subsistence farming to feed their families. The horticulture project provides a way to scale up food nutrition, and it offers an alternative livelihood for our community partners. It offers communities an opportunity to earn a sustainable income from selling produce, instead of cutting down trees for charcoal production, or turning to poaching... both of which contribute to deforestation and endanger vital ecosystems in the Luangwa to Lower Zambezi valley.



BCP Partners with Nature's Nectar to Create Livelihood Opportunities for Local Communities

Beekeeping has been a livelihood in Zambia for centuries through the use of traditional bark beehives and hunting for wild honey. But with the increasing growth in the market for Zambian honey, these techniques are becoming more and more destructive to rural Zambian ecosystems.



Communities enter Game Management Areas (GMAs) in order to cut trees for wild honey or strip trees of their bark in order to construct bark beehives. These methods are not sustainable, which is why BCP has partnered with Nature's Nectar, a social enterprise aiming at producing Zambia's most sustainable honey with communities living directly near conservation areas and national parks.

Providing a sustainable income to **626** beekeepers and their families across both of our project areas (**133** of whom are female farmers), the farmers have just produced their first honey harvest, which has yielded a total of almost **7,390 kgs** of honey!

“I started beekeeping last year and I have benefited a lot from this partnership as they offer premium prices for honey purchases and I have been able to get farming inputs from my sales of honey. I further ask the partnership to continue as it will empower more households in the chiefdom”.

Esnart Mwanza Njobvu, Beekeeper in Mkhanya Chiefdom.

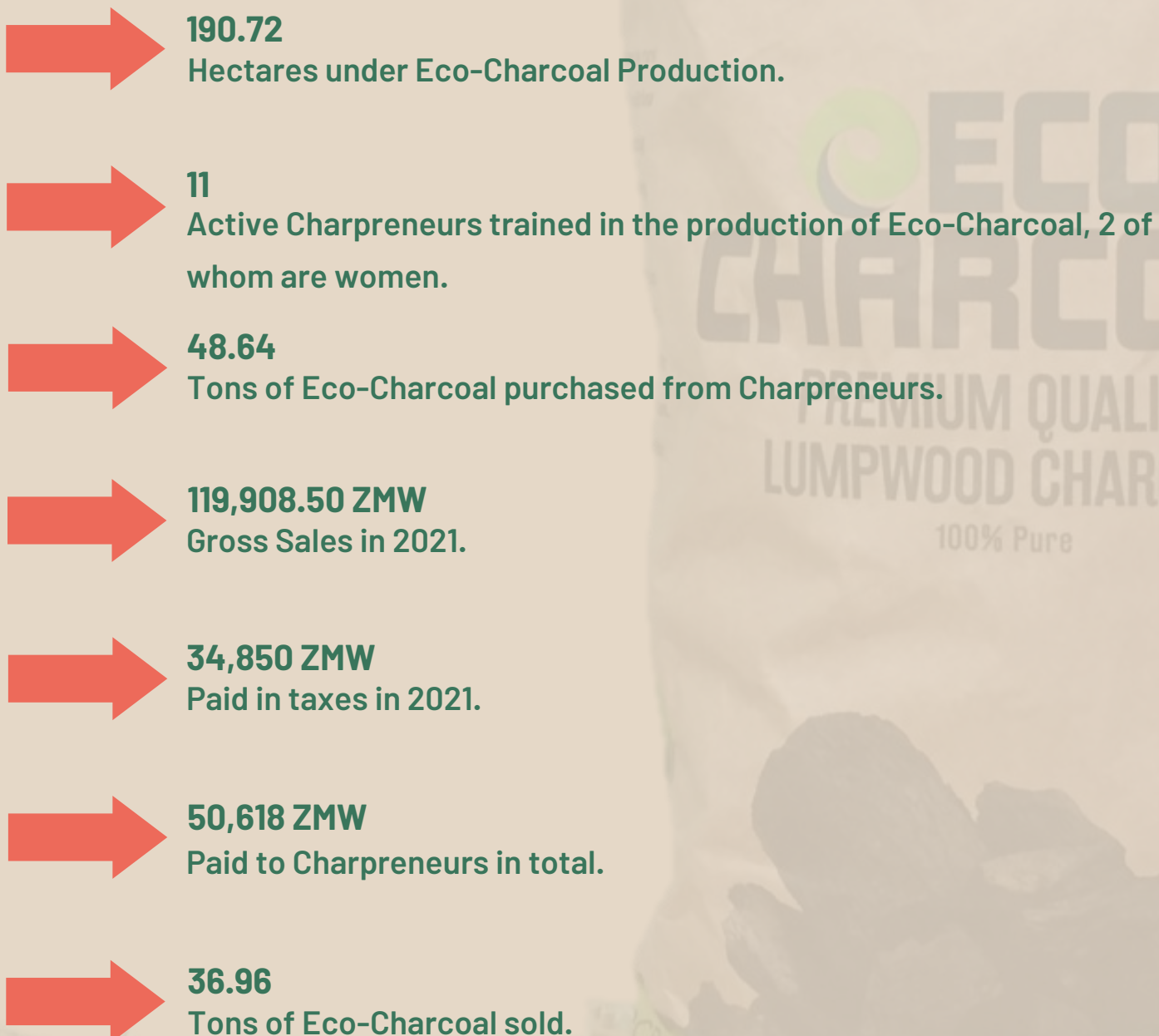


Nature's Nectar, a Zambian NGO, works with these communities in order to provide sustainable top bar beehives that do not extract wood from the local forest but provide an incentive to protect it. It is the goal of BCP and Nature's Nectar to provide a minimum of 25,000 top bar beehives to communities and provide a premium market to all farmers producing honey, as part of our mission towards creating sustainable and climate-friendly livelihood alternatives for our community partners.

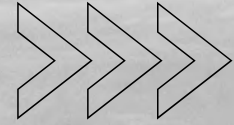


Eco-Charcoal

The demand for charcoal is a major cause of deforestation in Zambia. BCP Trust created Eco-Charcoal in response to this clear need to create a legal, sustainable alternative product for the market. Eco-Charcoal is Zambia's premium lumpwood charcoal which is sustainably produced to protect Zambian forests. It is 100% pure and natural and burns 20% longer than regular charcoal. It is produced using a modern method that reduces harmful smoke and emissions during use, which reduces the risk of harmful inhalation by its users. Eco-Charcoal currently partners with 11 trained community producers we call "Charpreneurs" in a bid to provide fair and safe employment for rural Zambians.



100 % Climate Positive in 2021



Marking our 7th year as a climate positive company!

We track our carbon intensity per person monthly, while our offices rely on renewable energy, and we continue to ramp up our investments in solar power to power our operations.

We even have a policy not to spend company money on red meat, and are on track to offer more plant-based meals for office lunches. We ended 2021 on a 'high' with our emission rate showing a 25% decrease at the end of December.

In 2021 BCP increased our motorbike fleet over cars, as they are 5 times more efficient, while we offer carpooling services for our teams to reach work. Due largely to Covid-19, BCP invested in new technology to enhance virtual meetings, and as a result have cut down on travel dramatically! All of our sites carry out a strict recycling policy, with some of the waste products, such as plastic and glass going toward NGO recycling projects in Mfuwe that helps fund conservation education in Eastern Province.

And lastly, it was controversial, but we decided to use our buying power to enhance our supply chain and vendor 'ecosystem', in 2020, we announced an updated vendor's policy that states we will give our business only to vendors with aligned environmental policies.



Protecting and Connecting Vital Legacy Landscapes throughout Africa

Together with communities and Government, by protecting threatened areas of biodiversity significance, we're helping to create one of Africa's largest migration corridors, by protecting the habitat linking 5 National Parks in Zambia to conserve biodiversity connectivity for Zambia, Malawi, Zimbabwe, and Mozambique. The result of which is helping to connect some of the World's last remaining wildlife legacy landscapes of significant biodiversity to the greater African landscape.

African species still migrate through large landscapes in Sub-Saharan Africa including endangered species such as elephants, lions and wild dogs. The Luangwa-Lower Zambezi eco-system is one of the world's last 10 remaining wildlife legacy landscapes on Earth.

Historically humans have divided land with country borders and National Parks, which in some cases actually isolates wildlife populations, putting them at greater risk of extinction.



We tackle the root causes of deforestation and wildlife crime at a community level to create long-term and sustainable change



UP TO 83% OF RURAL ZAMBIANS FACE CRITICAL POVERTY

Poverty drives deforestation as communities cut forests to generate income from agriculture and charcoal. Wildlife populations are threatened as a source of food or as an alternative income to vulnerable people, with the international demand for ivory, pangolin scales, and trophies higher than ever before.



BIODIVERSITY

Zambia remains one of the most heavily forested countries in Africa and contains phenomenally diverse and spectacular wildlife legacy landscapes. However, current land-use practices don't generate the resources necessary to effectively conserve these natural resources.



CLIMATE CHANGE THREATENS THE MOST VULNERABLE

Climate change has altered rainfall in Zambia. When rural communities experience severe crop failure due to drought, many supplement their income with forest cutting and illegal hunting.

Our REDD+ project areas protect numerous wildlife species at risk of extinction:



AFRICAN WILD DOG



TEMMINCK'S PANGOLIN



AFRICAN LEOPARD



AFRICAN LION



AFRICAN ELEPHANT



SOUTHERN GROUND HORNBILL

Mpanshya Wildlife Corridor

A Win for Biodiversity Under REDD+

The Mpanshya Wildlife corridor is of rich biodiversity significance as it links two of the most valuable ecosystems in Zambia, from the Lower Zambezi National Park to South Luangwa National Park, to combine one of the last remaining wildlife strongholds left on Earth.

We are delighted to share that our Government partners through the Forestry Department officially approved the establishment of the 15,000+ hectare Mpanshya Wildlife Corridor in 2021.

Preserving this corridor will help with wildlife gene flow for generations to come. This link is a direct result of Mpanshya Chiefdom's vision towards a healthy connected landscape that is carbon-financed, together with the Zambian Government's innovative approach to combating climate change through a green economy. The corridor crosses the Great East Highway and protects, in perpetuity, a path across this important highway. The need for a corridor became more acute when elephants were recorded crossing the highway for the first time in years and conservationists tracked wild dog from South Luangwa to near the north of the corridor.

There is an ever-increasing demand across the continent to support a booming population, with unsustainable farming practices, charcoal production, and logging taking its toll on African forests to a detrimental extent. Zambia's deforestation is amongst the highest in the world, with the 8th NDP reporting a loss of more than 172,000ha tree cover per annum of valuable wildlife habitat. With the mighty African elephant now officially listed as endangered, and Wild Dog numbers down to as few as 6,600 across the entire continent, and the very real impacts of climate change and global warming having severe impacts on food security in countries across Africa, this milestone of connecting two of the last remaining wildlife strongholds in the world isn't just a win for us, it's a win for the World.



Investing in Resource Protection in 2021

2021 saw BCP and Partners Supported Community Scouts complete and excel in a number of different training programs in an effort to build resilience for resource protection in the REDD+ zones:

- ① SMART (Spatial Monitoring and Reporting Tool) Data Collection Training.
- ② Operational Refresher Training led by DNPW.
- ③ Joint Honorary Forestry Officer Training.
- ④ First Aid Training.
- ⑤ Biodiversity Training in Species Identification.
- ⑥ Biodiversity Monitoring and Data Collection.
- ⑦ Track and Sign Training in Munyamadzi.
- ⑧ Smart Debrief Data Management.







In order to scale our conservation efforts we realize that there is a need to invest in the very people on the ground protecting Zambia's forests. By optimizing the Scouts ability to report on, monitor, and identify while on patrols helps to bolster resource protection in the area, while developing the Scouts practical skill sets, and helps our conservation team tremendously in biodiversity reporting.

BCP works with a number of amazing partners, who help with funding, equipment, training, access to private land and with rations for the Scouts. Without whom, our conservation efforts to protect Zambia's wild spaces would not be possible.

Thank you to The Department of National Parks and Wildlife, Munyamadzi Game Reserve, Lion Landscapes, Lion Recovery Fund, Bedrock Africa, Panthera, National Geographic's Big Cats Initiative, Wild CRU, and Darwin Initiative.


Biodiversity and Conservation Impacts in 2021



- 
18,493
 Total Annual Conservation Days.
- 
221
 Total Snares removed from REDD+ zones.
- 
16
 Monthly Average Number of Conservation Days per Scout.
- 
160
 Airwing Hours Flown carrying out aerial monitoring of REDD+ zones.
- 
4
 Separate observations made of wild dog across 3 Chiefdoms in LCFP.
- 
57
 Observations of Southern Ground Hornbill in LZRP.

African Wild Dog is a Trigger Species under CCB.





441
BCP, CRB and private partners supported Community Scouts Patrolling REDD+ Zones.

128
Arrests made by the Department of National Parks and Wildlife.

7
Firearms Recovered from Illegal Wildlife Activities in Game Management Areas.

29%
of Community Scouts on BCP's Payroll are Women.

77
Observations of Elephant across 8 Chiefdoms in LCFP.

28
Observations of Southern Ground Hornbill in LCFP.



Lion Carbon

In 2021 BCP teamed up with Lion Landscapes to launch the innovative approach to lion conservation in Africa through lion carbon.

Lion Carbon is a tool to close the funding gap in protecting Africa's greatest wildlife legacy landscapes. Sustainable income for local communities, linked to the conservation of their forests and wildlife, is generated through the REDD+ (Reducing Emissions from Deforestation and Degradation) mechanism. At the same time, local and regional capacity to sustainably manage wildlife and forests is increased through proper management planning, anti-poaching, and monitoring.

Lion Carbon's mission is to make biodiversity, including the largest carnivores, valuable to local communities, and increase their capacity to sustainably manage that biodiversity.



What Sets Lion Carbon Apart?

- 1 Security**
Protect existing wildlife biodiversity through anti-poaching activities.
- 2 Regeneration**
Increase wildlife biodiversity through active introductions.
- 3 Monitoring**
To inform the adaptive management of all wildlife conservation efforts.



Team #24 Eco-Charcoal raised \$60,000 ALL FOR Conservation Education in Zambia

This year, thanks to your support, Team #24 Eco-Charcoal raised the highest amount in its history of competing in The Fuch's Elephant Charge – \$60,000, all for conservation education in Zambia.



I don't think a single one of us could have anticipated just how catastrophic the prolonged effects of the pandemic would have on the economy. It was now more than ever that we knew we had to support the conservation "ecosystem" and fundraise to raise money for the 14 Conservation NGOs that the Elephant Charge supports, with BCP's Board committing to match every dollar up to \$25,000 it meant we could create double the IMPACT!

Excited to unveil Monster Carbon 2.0 – a Jeep Wrangler, in this year's Charge, the Team was put at a slight disadvantage when the jeep experienced mechanical issues during the final days leading up to the Charge. Bringing our previous Charge car out of retirement was the only choice the team had to compete in this year's Charge. Despite our best effort to pull through, we knew that we were starting with a weaker platform using a 33 year old car with 540,000 kms on the clock and no overhaul. Due to what can only be described as 'severe mechanical malfunctions beyond repair', the Team ultimately finished 25th out of 33 with a DNF (did not finish: 22 teams successfully completed the Charge this year). Our front propeller shaft snapped in two, our brakes caught fire and failed, and our rear winch packed up—all on a steep hill. It took us the rest of the day trying to recover the vehicle and get it downhill. There were no injuries, and everyone had a good time, but it was definitely more drama than we had hoped for.

Testament to the Team's best efforts to persevere at all costs they came home with The Properly Shafted Award but most importantly, thanks to YOUR donations, the Team returned triumphantly once again with The Sausage Tree Trophy for Most Funds Raised! With the entire sum of \$60,000 that the Team raised going to the 14 Conservation NGOs that the Elephant Charge supports.

We have been blown away by your support and willingness to give. We set out to raise \$50,000, but because of your generosity, together with the Board's generous donation, we surpassed that by 20%! A special tribute needs to go out to the amazing team of organizers that volunteer their time and effort every year to make the Fuch's Elephant Charge happen! Now in its 14th year, the event has raised close to \$1.5 million for conservation, with this year raising a whopping \$232,000 in a day for conservation; a 66% increase over 2020.

To each and every single person who donated, from the bottom of our hearts – Thank you!





Best for Workers in 2021

BCP is part of a global community of Certified B Corporations (B Corps) that are uniting for-profit companies to use the power of business to build a more inclusive and sustainable economy. B Corps meet the highest verified standards of social and environmental performance, transparency, and accountability. With certification processes that use credible, comprehensive, transparent, and independent standards to ensure verification, verified B Corporations are companies that you can trust. As part of the B Corps community, BCP works towards reduced inequality, a healthier environment, stronger communities, and the creation of high-quality jobs with dignity and purpose. As a registered B Corp, BCP is contractually required to consider the impact of our decisions on our employees, customers, suppliers, community, and the environment by participating in audits every two years that assess and ensure that our policies and practices are held to the highest standards.

We are proud to share that as a result of our continued dedication to our employees, and to upholding our environmental and sustainable responsibilities to better our planet, that BCP ranked in the top 0.5% of B Corps Globally, following our recertification in April 2021. BCP scored the second-highest rating in Africa and ranked 17th in the world out of a total of over 4,000 companies, earning us the title of “Best for the World Honoree” for our rating of 150+.

-  **227**
People on Payroll
-  **27%**
Female Employment Rate
-  **99%**
African Born
-  **95%**
Zambia Citizens
-  **2,000+**
income-generating opportunities created as a result of REDD+ projects and initiatives at a Chiefdom level.
-  **Healthy Green Lunches**
are offered to all of our employees everyday.
-  **The Inspiration Fund**
was introduced in order to support BCP staff to pursue higher education and greater expertise in their field.



#TEAMBSCP



UN Sustainable Development Goals

Our Commitment to our Planet: BCP currently aligns with 16 out of the 17 UN Sustainable Development Goals, with our goal to meet all 17 by 2030.



No Poverty

In partnership with local communities in Zambia, BCP uses the REDD+

mechanism to create a sustainable model where communities receive performance-based, Forest Carbon Fees for any activities that protect their forests and the wildlife inhabiting these forests. BCP reduces social and economic risk through the monetization of carbon and other livelihood interventions.



Zero Hunger

BCP, in collaboration with the Ministry of Agriculture and Livestock, has been

working with farmers in an effort to address food security challenges through the farmer to farmer extension model. In an effort to respond to the country's vulnerability to climate change challenges, which directly affects food security in the country, BCP has invested in Climate-Smart Agriculture technologies. With agriculture expansion as such a major threat to the forests, Climate-Smart Agriculture helps to provide food security and a sustainable future for some of Zambia's most nutrition insecure families



Good Health and Well Being

Forest Carbon Fees generated from the sale of BCP's verified carbon credits are invested into community development projects that will support upliftment of the community as a whole. Health care facilities such as clinics have been built to support our community partners to allow for easier access to necessary healthcare when required. Community partners have also been supported with the procurement of boats for easier access to health care as well as the installation of WASH (Water and Sanitation) projects that support the health and well being of the community.





Quality Education

Through Forest Carbon Fees
Educational facilities such as schools

and teachers' houses have been built to support our community partners to allow for easier access to education. Building teachers' houses is necessary to attract and retain good quality and qualified teachers to support educational needs.

BCP also supports the upliftment of community partners through the training, equipping and compensation of BCP supported community scouts. This provides community partners with skills development and the opportunity to support higher education for financial success of our community partners.





Gender Equality

Gender equality is at the forefront of BCP's project and company goals.

At the Community Forest Management Group (CFMG - is the institution to which Forest Carbon Fees are directly transferred to) planning level, meetings are run in a way that women are specifically included in the decision making process. Despite cultural norms that make resource protection predominantly a male role, BCP's projects are managing to attract women into community scout roles. A large part of the role of the community scouts will be to engage local communities in biodiversity conservation issues. We believe that female Community Scouts will have a better understanding of the needs of local women and the factors governing their decision making. Women will be better at engaging other local women within their communities.

The REDD+ benefit-sharing mechanism is designed to give women equal rights and equal access to economic resources. More than half of the beneficiaries are currently women. Elections of the CFMG members are democratic. According to the Zambian Constitution, a minimum number of women are to be included on any committee or board ensuring the women will be represented.





Clean Water and Sanitation

Forest Carbon Fees generated from the sale of verified carbon offsets are used to fund Community development projects supporting sanitation and access to clean water. BCP's project zones safeguard two vital river systems, namely the Luangwa and Zambezi watersheds, which protect and feed their respective ecosystems. By protecting the forests that support these rivers, we are supporting these critical water related ecosystems.



Decent Work and Economic Growth

BCP is creating jobs at a community level to support increases in household income and economic growth. Community jobs are created for positions such as BCP supported Community Scouts, members of the Forest Monitoring Team and community teacher positions.

Through projects funded by forest carbon fees, we have calculated that over 2,000+ additional income generating opportunities are being created within the communities to support the projects.



Affordable and Clean Energy

It's estimated that only 28% of Zambians have access to electricity, leaving charcoal as the source of cooking and heat. Charcoal production is also one of the primary income sources for many rural Zambians.

BCP created Eco-Charcoal in response to the clear need to create a legal, sustainable alternative product for the Zambian market. Eco-Charcoal is sustainably produced to protect Zambian forests. It is 100% pure and natural and burns 20% longer than regular charcoal. It is produced using a modern method that reduces harmful smoke and emissions during use, which reduces the risk of harmful inhalation by its users. Eco-Charcoal has trained a total of 83 community producers we call "Charpreneurs" in a bid to provide fair and safe employment for rural Zambians.

Forest carbon fees generated from the sale of verified carbon offsets fund solar installation for community beneficiaries, particularly for educational facilities.



Industry, Innovation and Infrastructure

The REDD+ mechanism used to develop BCP's carbon offsetting projects is designed as an innovative solution to help rural community members in Zambia to see and realize tangible value from keeping their forests alive. BCP pioneered REDD+ in Zambia with the Lower Zambezi REDD+ Project being the first REDD+ Project in Zambia. BCP also supported the first communities in Zambia to gain access to their carbon rights and to benefit from carbon trade.

The additionality aspect of the REDD+ model adds further value to the mechanism through supporting social and environmental/conservation benefits. Audited and verified standards include VCS, CCB, and BCorp. Although not externally audited, other international project standards that BCP is working to align with are IFC and ISO 14001. BCP also has a stringent internal audit system that tracks Environmental and Social Management.

Forest carbon science innovation supports technology and industry development within developing countries such as Zambia and supports rural communities gaining access to global markets through various livelihood initiatives such as bee keeping and Eco-Charcoal.





Reduced Inequalities

BCP's projects and the corresponding benefit sharing mechanisms are

designed to allow equal opportunities and reduce inequality for all community partners. Beneficiaries are incentivized both directly and indirectly through the community value creation package for activities that support the protection of forests and wildlife.

BCP's projects are supporting increased household income, infrastructure development and foreign investment into developing countries in Africa such as Zambia.



Sustainable Cities and Communities

Through the mobilization of Forest Carbon Fees generated from the sale of verified carbon offsets from BCP's projects, communities are able to develop infrastructure and support livelihood initiatives that make community settlements inclusive, safe, resilient and sustainable.

Climate-Smart Agricultural techniques passed on to community partners helps to reduce environmental impact as well as support an oversupply of crop for market entry.



Responsible Consumption and Production

REDD+ is a mechanism designed to "Reduce Emissions from Deforestation and Forest degradation".

This offsetting model is designed to promote sustainability and the preservation of natural resources. BCP sells verified carbon offsets generated from REDD+ projects that we directly develop to buyers in the voluntary carbon market. BCP directly supports sustainable practices through its core business by selling carbon offsets verified against international standards to buyers in order to support the end user's sustainability goals. BCP's projects span just over 1 Million Hectares of protected, African dryland forest and together with our community and Government partners, have reduced 6,969,896 Tonnes of carbon from being released into the environment since inception in 2012.

As a company, we have led by example and promoted sustainability by being one of the first companies globally to offset more carbon than emitted since the company's formation. BCP has been Climate Positive for 7 years.





Climate Action

Forest carbon offers one of the most significant and cost-effective solutions for climate action in the coming decade.

Research indicates that forests and other natural climate solutions (NCS) are capable of providing up to one-third of climate mitigation needed by 2030 (2021 State of the forest carbon finance).

BCP's projects are directly addressing climate change through REDD+. The model is replicable and scalable and our projects have been verified through international auditors and against international standards to be reducing approximately 1.7 Million Tonnes of carbon emissions from being released into the atmosphere on an annual basis.

At a project level, community partners are educated and sensitized on the importance of climate action and our projects support climate smart agricultural techniques as well as other livelihood initiatives that involve the sustainable management and use of forest resources such as Eco-Charcoal and honey production.





Life on Land

Both of BCP's projects link together to protect over 1 Million hectare of contiguous wildlife corridor extending from the Luangwa to Lower Zambezi ecosystems.

The LCFP acts as an important protective buffer to the South Luangwa, North Luangwa, Luambe, Lower Zambezi, and Lukusuzi National Parks, providing safe habitat and protected migration paths for wildlife. This important stretch of land is home to threatened species such as lions, wild dogs and elephants.

BCP will only choose to operate in zones that hold high ecological value and considered to be legacy landscapes in terms of threatened biodiversity. As much as social benefits are important to BCP's mission, conservation of wildlife strongholds are equally as important. In order to provide the security required to protect these zones, BCP supported community scouts are deployed to address encroachment as well as wildlife crime. Scouts are also trained to identify wildlife and log this important data on handheld devices as part of their line of work. Aerial patrols are also conducted weekly in order to keep a look out for encroachment and poachers from the skies.

BCP partners with Oxford affiliated, Lion Landscapes, in order to support biodiversity monitoring efforts within our project zones. This is the 4th consecutive year that a structured biodiversity survey was conducted in LZRP. The survey design is based on a line transect method which is statistically robust. The results from the surveys indicate that the recovery rate of wildlife in LZRP is slow, mainly as a result of the level of depletion prior to 2012, when BCP took over management. Additionally, Miombo Forest is lower densities habitat. However, the trends in wildlife abundance ratios are encouraging. While the actual wildlife numbers remain low, steady increases were recorded for Klipspringer, Kudu, Roan Antelope, Sable Antelope and Warthog, Bushbuck, Grey Duiker and Sharpe's Grysbok. 2020 was our year to prove the link between protecting forests in LZRP and the increase of wildlife in the area. The correlation between zero encroachment and the return of wildlife to Rufunsa is clear. Biodiversity monitoring efforts are being rolled out in select zones within LCFP with the idea of expanding these monitoring efforts over time.



Peace, Justice and Strong Institutions

The REDD+ mechanism used to develop BCP's carbon offsetting projects is designed as an innovative solution to help rural community members in Zambia to see and realize tangible value from keeping their forests alive.

BCP pioneered REDD+ in Zambia with the Lower Zambezi REDD+ Project being the first REDD+ Project in Zambia. BCP also supported the first communities in Zambia to gain access to their carbon rights and to benefit from carbon trade.

The REDD+ model is designed to support decentralized forest management. In order to support this, BCP supports the establishment of effective institutions (CFMGs) through Forestry Department in order for communities to effectively manage their own forests. Further to the support of the establishment of these institutions, BCP supports the effective capacity building and strengthening of these institutions in order for CFMGs to define, plan and achieve their own development objectives on an inclusive and sustainable basis through effective Annual Work Planning, risk mitigation and development tools. and through the establishment of robust Forest Management Plans.





Partnerships for the Goals

The development of BCP's projects have attracted foreign investment into Zambia, a developing country in Africa.

The financial resources continue to be mobilized through the annual disbursement of Forest Carbon Fees from the sale of verified carbon offsets that uplift and develop rural communities in some of the most impoverished areas in Zambia.

Community livelihood initiatives are intended to create a "beyond subsistence" mechanism that allows community beneficiaries to create income from sustainable sources that protect and conserve trees in their community forests. BCP helps connect these locally produced products such as honey and Eco-Charcoal to an international market of buyers to create value beyond subsistence. BCP helps to remove these significant barriers to trade through this market connection.

REDD+ is an innovative and sustainable technology that supports forest protection, community development and the protection of threatened wildlife. The Lower Zambezi REDD+ Project was the first REDD+ project in Zambia and pioneered and introduced this concept of forest carbon to Zambia. The LCFP followed the LZRP by becoming the largest REDD+ project in Africa by hectares and arguably, the largest in the World in terms of quantified social benefits as the project supports over 217,000 people.

BCP partners closely with the Zambian Government, particularly the Forestry Department and Department of National Parks and Wildlife, to support the Zambian Government to achieve Zambia's sustainability goals. REDD+ is paramount to achieving the necessary targets by 2030.



Zambia Brings It Home to Africa!

2021 was Zambia's time to shine in the Environmental Finance Annual Global Voluntary Carbon Market Rankings (A.K.A the Olympics of the carbon markets) with the LCFP ranked as the Best Individual Offsetting Project in the World, bringing the gold home to Zambia in 2021!

This recognition is testament to the Zambian Government's leadership in creating an enabling environment by granting carbon rights to communities. With carbon ownership, communities partnering in the LCFP have blazed a trail of increasing livelihoods and wildlife, while decreasing encroachment and emissions from deforestation, proving that quality and scalable community projects are possible.

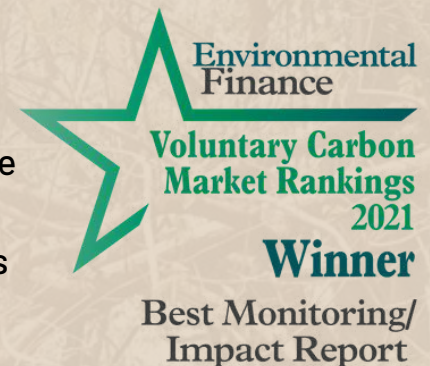
"The reason why I partnered with BCP is that we share the same values of protecting the environment. We have seen a lot of changes, in terms of wildlife numbers, how the forest is being cared for, and the community impacts. Through the partnership, we have seen development and enhanced infrastructure in the Chiefdom. As well as seeing the benefits of climate-smart agriculture techniques"

His Royal Highness and Chairman of the House of Chiefs, Senior Chief Luembe.

"It is such an achievement to be recognized in a global ranking such as this. Thank you to all of those who voted for us, and without whose commitment this would not be possible. We thank our community and government partners for their central role in these achievements showing that Zambia is far ahead in implementing quality forest protection at scale, and USAID for their visionary catalytic financial support of the project. Projects such as the LCFP embody hope, as they present an avenue that sees people benefitting, wildlife being conserved, and forests remaining intact for future generations"

Nic Mudaly, BCP ICEO.

In addition, on a national level BCP was honored to receive the Centre for Environmental Justice's Award for Ecosystem and Biodiversity Protection in Zambia.



30-Cubed

BCP's plan is to scale and reach our 30-Cubed goal by 2030: 30 million tons of carbon reduced annually across 30 million acres, benefiting 3 million people in Africa.

BCP is in the phase of replication and scaling and we have an ambitious goal for 2030 known as our "30-Cubed" goal:

1. To enter into co-management agreements across 30 million acres (11 million ha) of globally biodiversity important African forests;
2. To benefit 3 million people;
3. To reduce up to 30 million tons of carbon annually.



Looking Ahead

In line with our 30-Cubed Plan, looking to the future the landscape of climate action is both an exciting, yet deeply important one for us at BCP.

The Proposed KZCFP – P3



In partnership with FD, DNPW, PPF, TNC, BRE, and Communities we aim to deliver on Phase 1 of KZCFP target offsets by July 2025. Phase 1 is up to 2.5 million ha, with the potential to grow into an 8 million ha project by 2030 based on community and Government consent.

Limpopo, Mozambique – P4



A feasibility study in partnership with PPF is currently underway with an official start date subject to Government and community consent. The Limpopo project will aim to verify 2.5 million ha in 2026. This expansion strategy will leverage the presence, investment and networks of PPF. This project provides great opportunities to share Zambian management capacity internationally.

Okavango Headwaters, Angola – P5



In 2022, a pre-viability analysis in partnership with TNC and PPF will conclude with a potential target project start date of January 2024 subject to Government and community consent. The Okavango Headwaters Project will aim to verify 2.5 million ha in 2027. This expansion strategy will leverage the presence, investment and networks of TNC and PPF.

The Proposed Kafue-Zambezi Community Forests Project (KZCFP)

To create the Largest REDD + Project in the World! Our goal is to create a buffer zone that will surround the protected areas between Zambia's largest National Park; Kafue National Park, and Sioma Ngwezi National Park.

A critical step in achieving BCP's 30 Cubed goal is the establishment of our 3rd project in the Kafue-Zambezi ecosystem. Throughout 2021 our KZ team were hard at work to complete a full 10-month feasibility study.

The objective of this feasibility study was to assess the viability of creating the World's largest REDD+ project. This would result in improved wildlife habitat protection of threatened forest adjacent to Kafue National Park; linking Caprivi strip in Namibia and Angola.

The feasibility study was executed in partnership with the Department of National Parks and Wildlife, Forestry Department, Peace Parks Foundation (PPF), The Nature Conservancy (TNC), Barotse Royal Establishment, communities, and Eni. Communities are at the core of BCP and PPF's approach and will be extensively consulted throughout the project design process. Assuming community consent, the plan is for KZCFP to be VCS-verified and CCB-validated by 2025, increasing hectares under REDD+ and BCP's model to 3.6 Million Hectares. Due to the support received from communities the project will be executed using a phased approach with Phase 1 targeting 2.5 Million Hectares with the possibility to scale up to 8 Million Hectares by Phase 3.

Thank You!

As a global issue, climate change is one best solved together. BCP is a result of partnership - it's in our name!



In cooperation with 7,200 local community members in Bunda Bunda Chiefdom and The Soli Shamifwi Royal Establishment, BCP partners with: Mweshang'ombe Cooperative, Liyeyelo Cooperative, Chakanda Cooperative, and Chilimba Cooperative.



LCFP is implemented in partnership with the following Chiefdoms: Chitungulu Chiefdom, Nsefu Chiefdom, Jumbe Chiefdom, Mnkhanya Chiefdom, Malama Chiefdom, Msoro Chiefdom, Sandwe Chiefdom, Luembe Chiefdom, Nyalugwe Chiefdom, Shikabeta Chiefdom, Mpanshya Chiefdom, Mwanya Chiefdom.



The Barotse Royal Establishment



Lion Recovery Fund



Nyakolwe Game Reserve



Acknowledgements

None of the impacts that we present in this Impact Report would have been possible without the valued support and partnership that we receive from the Zambian Government.

BCP Impact Report co-produced and designed by Chloe Evans.

Co-Produced by Lourette Joubert.

Photographer Contributors: Muswema Chanda (Cover Photo by Muswema), Gina Woolley, Marilet Louw, Chloe Evans, Edward Selfe, Patrick Bentley, Francois D'elbee, Amie Fletcher, Nature's Nectar, and Stock Images courtesy of Canva Pro.

A Special Thank You to the entire BCP team for bringing the 2021 impacts to life and making them a reality for the community members we partner with.



BioCarbon Partners
Unit 3 Leopards Hill
Business Park,
Leopards Hill Road,
PO Box 50830.



www.bcp.earth



hello@biocarbonpartners.com



[@biocarbon_partners](https://www.instagram.com/biocarbon_partners)



[@BioCarbonPartners](https://www.facebook.com/BioCarbonPartners)



[@BCP\(BioCarbon Partners\)](https://www.linkedin.com/company/BCP(BioCarbonPartners))

